



# TACT SQUAD

PRODUCT CATALOG 2023

**COMING SOON!**

EARLY SPRING 2023

**PATRIOT  
COYOTE BOOT**

pg.33



**NOW IN STOCK**

**RIPSTOP  
TACTICAL CAP**

For more information go  
to page 38





# TACT SQUAD

For over 25 years, Tact Squad has offered an extensive line of products for Public Safety, Military and Security professionals around the world. We are proud to say that our uniforms are among the most sought-after in the marketplace.

Our goal at Tact Squad has always been to provide the best quality uniforms money can buy. To this day, our motto is "We've got you Covered!" with better prices, better quality, and better service. With the help of our Dealers and Customers, we have become one of the industry's leading uniform, duty gear, footwear, and accessory suppliers to Public Safety Professionals. We strive every day to achieve these results.

Tact Squad is the only company in our industry that owns and operates its own mills and Manufacturing plants. This gives Tact Squad a distinct advantage over its competitors in pricing, quality, and lead-times.

Our goal is to be #1 with our customers! We will not stop until we meet the ever-changing needs of our industry, ensuring we provide you with the 1st Class Service and products you expect and deserve.

Tact Squad- "We've got you Covered!"







# TABLE OF CONTENTS



**SHIRTS 01**



**TROUSERS 08**



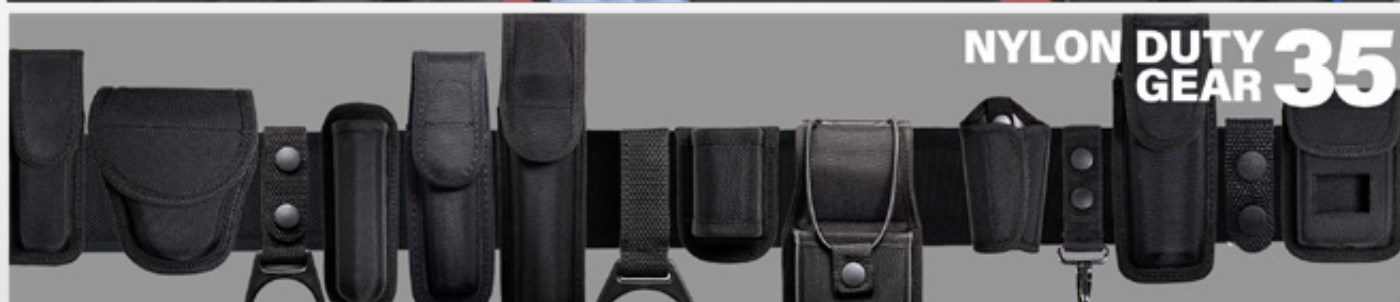
**OUTERWEAR 17**



**FOOTWEAR 31**



**NYLON BAGS 34**



**NYLON DUTY GEAR 35**



**ACCESSORIES 37**

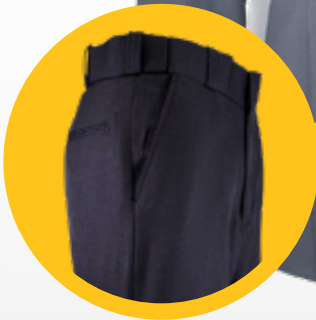


**TACT SQUAD**

For more information on our uniforms, footwear or nylon duty gear please visit our website at:  
[www.TactSquad.com](http://www.TactSquad.com)



SHIRTS



**FOR MATCHING TROUSER**

**7002 POLYESTER  
UNIFORM TROUSER**

*As seen on page 08*

## 100% POLYESTER UNIFORM SHIRT

**BEST SELLER**

- Fabric: 100% Polyester, 5-5.5 oz. per sq yd. / 9.5 per linear yd.; Tropical weave
- Industrial Laundry Friendly
- Five stitched-in military creases
- Pleated pockets with scalloped flaps; pen opening in left pocket
- Hook and loop closures on both pockets
- Cross-stitched epaulets unbutton to allow the use of shoulder loops
- Badge eyelets with internal support badge sling
- Extra long tail
- Machine washable

SKU	STYLE	SIZE CHART	
8002	L/S	A2	*XXS-XS Most Colors
8012	S/S	B2	*XXS-XS Most Colors

**Colors:** White, Tan, Navy, Gray, Black, Light Blue, French Blue,





# SHIRTS



#### HIDDEN ZIPPER FEATURE

Both our Two-Tone Uniform Shirts come with a hidden zipper for a simple and easy closure option to your shirt.

## TWO-TONE POLYESTER SHIRT WITH HIDDEN ZIPPER

- Fabric: 100% Polyester, 5-5.5 oz. per sq. yd. / 9.5 per linear yd.; Tropical Weave
- Industrial Laundry Friendly
- Contrasting pocket flaps and epaulets
- Hidden front zipper with faux button placket
- Five stitched-in military creases
- Badge eyelets with internal badge sling
- Extra long tail
- Pleated pockets with scalloped flaps
- Pen opening in left pocket
- Machine washable

SKU	STYLE	SIZE CHART	
8002	L/S	A2	*XXS-XS
8012	S/S	B2	*XXS-XS

Colors: Gray/Black, White/Navy

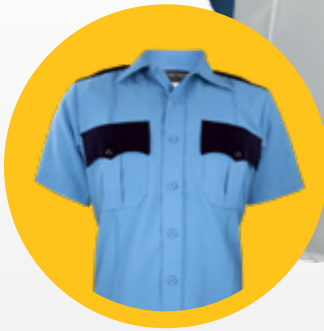
800.858.6755

02





SHIRTS



**ALSO AVAILABLE IN SHORT SLEEVE**

**8013 TWO-TONE POLY/COTTON  
UNIFORM SHIRT W/HIDDEN ZIPPER**  
Lt. Blue/navy *(only)*

## POLYESTER/COTTON UNIFORM SHIRT

- Fabric: 65% Polyester / 35% Cotton, 4.25 oz. per sq. yd. / 7 oz. per linear yd.; Tropical weave
- Five Stitched-in military creases
- Pleated pockets with scalloped flaps; pen opening in left pocket
- Hook and loop closures on both pockets
- Cross-stitched epaulets unbutton to allow the use of shoulder loops
- Badge eyelets with internal badge sling
- Extra long tail
- Machine washable

SKU	GENDER	STYLE	SIZE CHART
8013	M	S/S	B2*
8013W	W	S/S	D**
8003	M	L/S	A2*
8003W	W	L/S	C**

**\*\*Women's available in White, Light Blue, and Navy only.**

**Colors:** White, Tan, Navy, Gray,  
Light Blue, French Blue





SHIRTS



## POLYESTER/COTTON NYPD UNIFORM SHIRT

- Fabric: 65% Polyester / 35% Cotton; 9.5-10 oz, Tropical weave
- Class A, Long Sleeve Dress Shirt
- Permanent collar stays
- 1 3/4 inches spaced badge eyelets
- Collar has eyelet holes to accommodate insignia's
- Pleated pockets, scalloped flaps, hook and loop closures
- Pen opening in left breast pocket
- Cross-stitched shoulder epaulets
- Machine washable

\*No XXS-XS

SKU	GENDER	STYLE	SIZE CHART
F830	M	L/S	A2
Not all sleeve length available.			
F830W	W	L/S	C

Colors: Medium Blue, Navy

\*No XXS-XS

SKU	GENDER	STYLE	SIZE CHART
F831	M	S/S	B2
F831W	W	S/S	D

No Size 48 Available

Colors: Medium Blue, Navy

800.858.6755

04





SHIRTS

**FOR MATCHING TROUSER****T7004 STREET LEGAL TROUSER***As seen on page: 14***FOR MATCHING TROUSER****F703 POLY/WOOL ADMIN TROUSER***As seen on page: 16*

## STREET LEGAL SHIRT

- Fabric: 65% Polyester / 35% Cotton, 7.5 oz per sq. yd. / 12.5 oz. per linear yd.; Twill Weave
- Treated with Tactguard™ to resist water, oils, and other stains
- Stitched-in creases in front and back for crispness
- Pleated pockets with scalloped flaps and pen opening on left pocket
- Hook and loop closures on both pockets
- Convertible sports collar with permanent collar stays (**SHORT SLEEVE ONLY**)
- Two button adjustable cuffs (**LONG-SLEEVE ONLY**)
- Machine washable

SKU	STYLE	SIZE CHART	
<b>T8004</b>	<b>L/S</b>	<b>A2</b>	<i>*No XXS, XS, 6X</i>
<b>T8014</b>	<b>S/S</b>	<b>B2</b>	<i>*No XXS, XS, 6X</i>

**Colors:** Black, Dark Navy

## POLY/WOOL DUTY SHIRT

- 75% Polyester / 25% Worsted Wool; 11.5-12 oz Tropical Weave
- Lined banded collar with permanent collar stays
- Collar has eyelet holes to accommodate insignia's
- Pleated pockets, scalloped flaps, hook and loop closures
- Pen opening in left pocket
- Eyelet badge holder with internal badge sling
- Cross-stitched shoulder straps
- Silicon Crease to maintain a professional look
- Extra long shirt tails

SKU	GENDER	STYLE	SIZE CHART	
<b>F803</b>	<b>M</b>	<b>L/S</b>	<b>A2</b>	<i>*No XXS, XS, 6X</i>
<b>FW803</b>	<b>W</b>	<b>L/S</b>	<b>C</b>	<i>*No XXS, XS, 6X</i>
<b>F813</b>	<b>M</b>	<b>S/S</b>	<b>B2</b>	<i>*No XXS, XS, 6X</i>
<b>FW813</b>	<b>W</b>	<b>S/S</b>	<b>D2</b>	<i>*No XXS, XS, 6X</i>

**Colors:** Navy





SHIRTS

**FOR MATCHING TROUSER****T7010 RIPSTOP BDU TROUSER***As seen on page: 15***RIPSTOP BDU SHIRT**

- Fabric: 65% Polyester / 35% Cotton, Ripstop 6.5 oz per sq. yd. / 11 oz. per linear yd.;
- Sewn to military specifications
- Rectangular flaps and hidden button closure
- Two pocket design
- Pen opening in top left pocket
- Double-stitched for durability
- Concealed button front
- Reinforced elbow patches and roll-up sleeve feature
- Machine washable

SKU	STYLE	SIZE CHART
T8010	L/S	G *No XXS, XS

**Colors:** Black, Navy**FOR MATCHING TROUSER****T7512 LIGHTWEIGHT MICRO RIPSTOP TACTICAL TROUSER***As seen on page: 9***LIGHTWEIGHT MICRO TACTICAL RIPSTOP SHIRT**

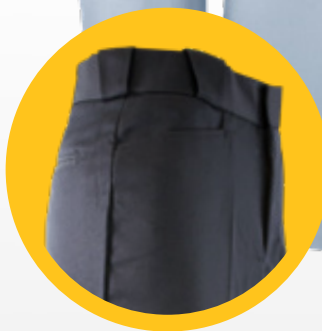
- Fabric: 65% Polyester / 35% Cotton, Lightweight Micro Ripstop 4.25 - 4.5 oz.
- Treated with Tactguard™ Fabric Protector to resist water, oils, and other fluids
- Matching name tape and badge tab provided
- Permanent Collar Stays
- Seven button front with hidden YKK zipper matching shirt color
- Two breast pockets w/ two concealed map/document pouches beneath breast pockets
- Two button adjustable cuff
- Side seam mic cord panels
- Breathable gusseted arm pits
- Reinforced elbows

SKU	SIZE CHART
T8512	A2 *No XXS, XS, 6X

**Colors:** Dark Navy (No 6x)  
Khaki (No XXS, XS, 6x)**800.858.6755****06**



SHIRTS



**FOR MATCHING TROUSER**

**7033 POLYESTER ELASTIQUE  
TRANSIT TROUSER**

*As seen on page 12*

## **M** DELUX TRANSIT SHIRT

- Fabric: 65% Polyester / 35% Cotton, heavy-duty 4.75 - 5 oz. per sq. yd. / 8 oz per linear yd.; Tropical Weave
- **(Short Sleeve)** Square bottom allows shirt to be worn untucked, but maintain uniform appearance
- Wrinkle resistant finish
- **(L/S)** Convertible collar provides a professional look
- Two open-top flapped pockets
- Machine Washable

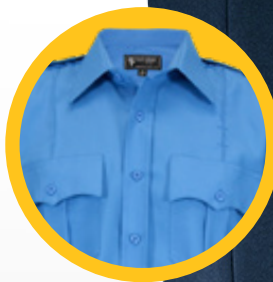
SKU	GENDER	STYLE	SIZE CHART	
8301	M	Short Sleeve	B2	*No XXS, XS, 6XL
8301W	W	Short Sleeve	D	
8300	M	Long Sleeve	A2	*No XXS, XS, 6XL
8300W	W	Long Sleeve	C	

**Colors:** Light Blue





# TROUSERS



#### FOR MATCHING SHIRT

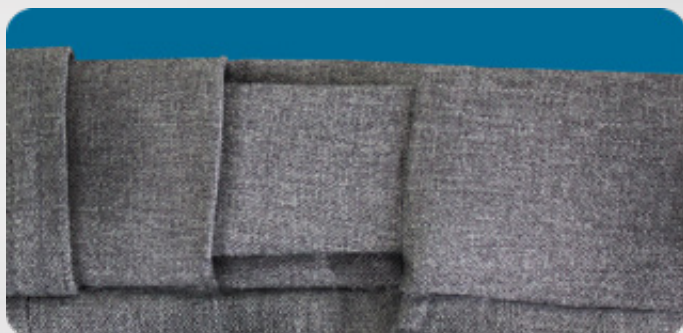
**8002 100% POLYESTER  
UNIFORM SHIRT**

*As seen on page 01*

## POLYESTER UNIFORM TROUSER

### BEST SELLER

- Fabric: 100% Polyester, Twill weave 7-7.5 oz. per sq. yd. / 12 oz. per linear yd.;
- Industrial Laundry Friendly
- At-Ease™ slide adjustment waistband
- Lined 7/8 in. inserted belt loops
- Quarter-top front pockets
- Heavy-duty YKK® brass locking zipper
- Two back pockets with button tab on left pocket
- Bar-tacks on all stress points for durability
- Machine washable



At-Ease™ slide adjustment waistband

SKU	GENDER	SIZE CHART
7002	M	E
7002W	W	F

**Colors:** Black, Heather Gray,  
Brown, Navy

800.858.6755

08



TROUSERS



## LIGHTWEIGHT MICRO RIPSTOP TACTICAL TROUSERS

### BEST SELLER

- Fabric: 65% Polyester / 35% Cotton, 6.5 oz per sq. yd. / 10 oz. per linear yd.; Lightweight Micro Ripstop Fabric
- Tactguard™ Fabric Protector allows resistance to water, oil, and stains
- At-Ease™ slide adjustment waistband guarantees your trousers will fit comfortably
- Gusseted crotch
- Double reinforced knee panels
- 2 cargo pockets with ergonomically designed flaps and internal box pleats
- Accessible cell phone / pistol mag pocket on both sides
- Heavy-duty YKK® zipper
- Snap waist closure with french fly
- Double reinforced pocket corners
- Women's style features low-rise design
- Back welt pockets with flaps
- Separated belt loops to allow attachment of badge (front loops)
- Machine washable

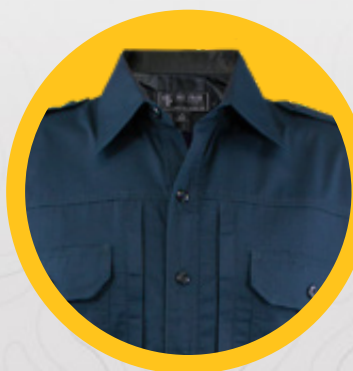
#### SKU SIZE CHART

T7512	E2	*Available 26-54
-------	----	------------------

TW7512	F	Not Available in Charcoal Gray
--------	---	--------------------------------

\*All Trousers come unhemmed

**Colors:** Black, Dark Navy, Brown, Charcoal Gray, Khaki



### FOR MATCHING SHIRT

**T8512 LIGHTWEIGHT MICRO TACTICAL RIPSTOP SHIRT**

As seen on page 06





# TROUSERS



Seperate front belt loop for badge



Double reinforced pocket corners



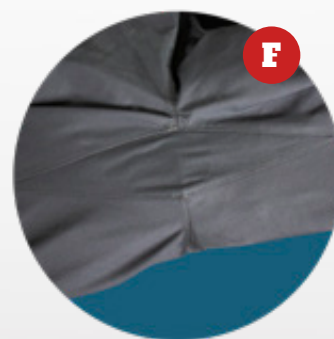
Hidden cellphone/pistol mag pocket hidden behind side pocket



At Ease™ waistband



Back welt pockets with flaps



Diamond Gusset crotch

**NOW AVAILABLE!**

**C205**

**ADJUSTABLE BALL CAP RIP-STOP**

For more information, see page:38



800.858.6755

10



# TROUSERS

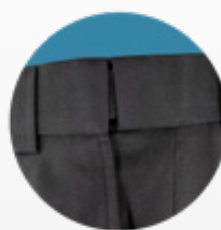


## POLY/COTTON UNIFORM TROUSERS

- Fabric: 65% Polyester / 35% Cotton, 7.5 oz. per sq. yd. / 12.5 oz per linear yd.; Twill weave
- Coated with Tactguard™ Fabric protection
- 1<sup>7</sup>/<sub>8</sub> in. inserted belt loops
- Two quarter front pockets and two back pockets
- Bar-tacks at all stress points for durability
- French fly with auto-lock brass zipper
- Gusseted Crotch
- Comfort fit pattern to accommodate athletic builds
- Machine washable

SKU	GENDER	SIZE CHART
7012	M	E *No 64-66
7012W	W	F *No 26-30

**Colors:** Black, Navy



At-Ease™ Waistband



Reflective tape when cargo flap is tucked in



Hidden Zippered Cargo Pocket

## POLYESTER UNIFORM TROUSER WITH CARGO POCKETS

- Fabric: 100% Polyester, 7-7.25 oz. per sq. yd. / 12 oz per linear yd.; Twill weave
- Small outside pocket with hook and loop closure
  - Quarter-top front pockets
  - Heavy-duty YKK® zipper
  - Two back pockets with button tab on left pocket
  - Lined 7/8 in. inserted belt loops
  - Machine washable

SKU	SIZE CHART
T7007	E *No 62-66

**Colors:** Black, Dark Navy





# TROUSERS



Western pockets  
w/hidden watch pocket



Keystone belt loop



## ELASTIQUE UNIFORM TROUSER

- Fabric: 100% Polyester; Elastique weave
- 2 in. waistband with keystone belt loops
- Two billy/sap pockets
- Extra deep back pockets with button tab on the left
- Heavy-duty YKK® zipper with French fly for additional support
- Straight side pockets with watch pocket
- Snug-tex waistband
- Bar-tacks at key stress points
- Machine washable



## POLYESTER ELASTIQUE TRANSIT TROUSER

- Fabric: 100% Polyester; Elastique Weave
- Four pocket trouser with western style front pockets
- Heavy-duty YKK® zipper
- Snug-tex waistband helps to keep uniform shirt tucked in
- Triangular bar tacking at stress points
- French fly for added support
- Machine washable

SKU	GENDER	SIZE CHART	
7033	M	E	*No 64-66, Short Rise Available 30-44
7033W	W	F	*No 2, 26-30

Colors: Navy

SKU	SIZE CHART	
7003	E	*No 62, 64, 66

Colors: Navy, Green

800.858.6755



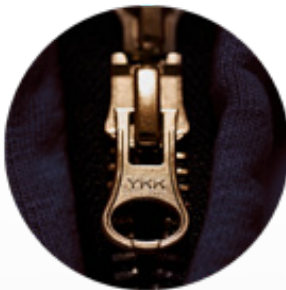
# TROUSERS



At Ease™ waistband



Gusseted crotch



Heavy-duty YKK® Zipper

## **POLY/COTTON NYPD TROUSER**

- Fabric: 65% Polyester / 35% Cotton; 7.8 oz
- Heavy-Duty Twill Weave
- At-Ease™ slide adjustment waistband
- Bar-tacks at stress point for durability
- French fly for added support
- Two top opening back pockets with cargo flap
- Two front quarter top pockets

SKU	SIZE CHART
-----	------------

F721DNE	E *No 58-66
---------	-------------

Colors: Navy



*\*Right Side*



*\*Left Side*





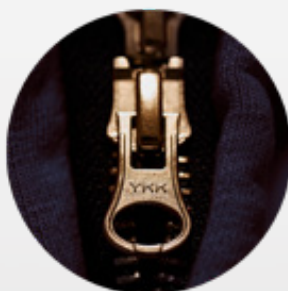
# TROUSERS



Side Pocket



At-Ease™ Waistband



Heavy-Duty  
YKK® Zipper

## EMS/EMT UTILITY TROUSER

- Fabric: 65% Polyester / 35% Cotton, 7.5 oz. per sq. yd. / 12.5 oz. per linear yd.; Twill weave
- Double hook and eye closure
- Reinforced knees and seat for durability
- Bar-tacks at all points of stress
- Six pocket design
- Machine washable

SKU	GENDER	SIZE CHART
7011	M	E *No 62-66
7011W	W	F *No 2, 26-30

Colors: Black, Navy



**FOR MATCHING SHIRT**

**T8004 STREET LEGAL SHIRT**

*As seen on page 05*

## STREET LEGAL TROUSERS

- Fabric: 65% Polyester / 35% Cotton, 7.5 oz per sq. yd. / 12.5 oz. per linear yd.; Twill weave
- Treated with Tactguard™ fabric protector to resist water, oils, and other fluids
- At-Ease™ slide adjustment waistband
- Supercrease® treated on front and back of leg
- Eight pocket design
- Two bellows-style cargo side pockets
- Two extra deep front pockets
- Two back pockets with button tabs
- Two billy pockets
- Snug-Tex waistband provides durability and helps shirts remain tucked
- Heavy-Duty YKK® zipper
- Drop belt loops
- Machine washable

SKU	GENDER	SIZE CHART
T7004	M	E *No 64-66
TW7004	W	F *Black Trousers Only

Colors: Black, Dark Navy

800.858.6755

14



# TROUSERS



## RIPSTOP BDU TROUSER

- Fabric: 65% Polyester / 35% Cotton, 6.5 oz per sq. yd. / 11 oz. per linear yd.; Ripstop fabric
- Sewn to military specifications
- Two front slash pockets
- Two rear pockets with snag proof rectangular pocket flaps with hidden button
- Two reinforced adjustable side waist tabs
- Reinforced knees and seat for durability
- Drawstring legs to tighten or shorten trousers
- Machine washable



Adjustable waistband



Button fly

SKU	SIZE CHART
T7010	H *Size XS in Black & Navy

Colors: Brown, Black, Navy

### FOR MATCHING SHIRT

## T8010 RIPSTOP BDU SHIRT

As seen on page 06





# TROUSERS



## **POLY/WOOL ADMIN TROUSERS**

- Fabric: 75% Polyester / 25% Worsted Wool; 11.5-12 oz Serge Weave
- At-Ease™ slide adjustment waistband
- Double hook and eye closures
- Lined 7/8 in. inserted belt loops
- On seam front pockets
- Billy Pocket
- French fly for additional support
- 1/2 in. black side stripe down both legs
- Heavy-duty brass zipper
- Triangle bar-tacks on back pockets
- Machine washable

SKU	GENDER	SIZE CHART
F703	M	E *No 48-66
FW703	W	F *No 2, 26, 20

**Colors:** Dark Navy



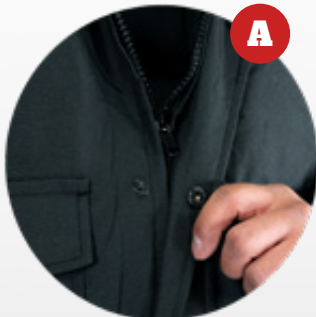
## **NEW YORK STYLE UNIFORM TROUSER**

- Fabric: 100% Polyester, 7-7.25 oz. per sq. yd./ 11.75 - 12 oz per linear yd.; Twill weave
- At-Ease™ slide adjustment waistband
- Six pocket design
- Straight style pockets
- Heavy-duty YKK® zipper
- Waistband designed for neatness
- 1/2 in. black stripe down both legs
- Bar-tacks at all points to stress
- Machine washable

SKU	SIZE CHART
7002NYE	E *No 62, 64, 66
7002NYWE	E Size 0 Available; No 26-30

**Colors:** Dark Navy

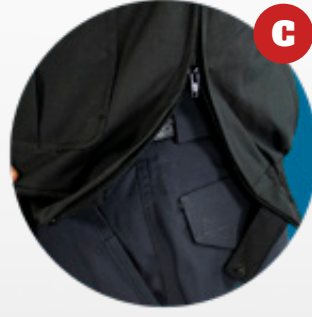
800.858.6755



Storm front flap



Removable fur collar and hood



Zippered side vents with snap closures

## PATROLMAN JACKET

**BEST SELLER**

- Fabric: 100% Polyester with water resistant coating
- Badge tab
- Removable quilted liner
- Three internal pockets
- Elastic waist band for a snug fit
- Machine washable

**SKU      SIZE CHART**

**1009**

**N**

Available in S-8x in both colors  
**Colors: Black, Navy**





## NYLON SHELL RAID JACKET

- Fabric: 100% Nylon outershell with Premium flannel inner lining, Reflective stripe on chest, back, sleeve, and cuff
- Metal button closure
- Drawstring waist and semi-elastic cuffs
- Slash hand warmer pockets
- Machine washable

SKU	SIZE CHART		
F1088	N	*No 6X	PLAIN
F1088NY	N	*No 6X	NYPD PRINT

Colors: Navy



## LINED WINDBREAKER

- Fabric: 100% Nylon shell with fleece inner lining, water resistant
- Reinforced hand-warmer pockets
- Color matching snap closures
- Drawstring waist and elastic cuff
- Machine washable

SKU	SIZE CHART
-----	------------

1111	N
------	---

Available in 7x and 8x  
Colors: Black, Navy



## CLASSIC "SECURITY" WINDBREAKER

- Fabric: 100% Nylon shell with fleece inner lining, water resistant
- Reinforced hand-warmer pockets
- Color matching snap closures
- Drawstring waist and elastic cuff
- SECURITY lettering on left chest and across back
- Machine washable

SKU	SIZE CHART
-----	------------

1112	N
------	---

Colors: Navy/White, Black/White







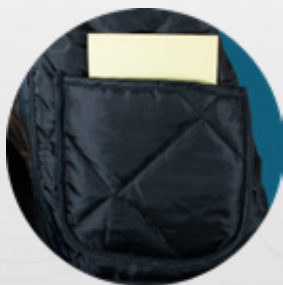
# CLASSIC DUTY JACKET

- Fabric: 100% Nylon shell
- Heavy-Duty Zipper
- Removable quilted liner
- Machine washable
- Badge tab with metal eyelets
- Two chest pocket w/hook + loop closure
- Elastic waistband

SKU	SIZE CHART
-----	------------

9001	N *Available in XS
------	--------------------

Colors: Navy, Black, Brown



Internal pocket



10" zippered side vents



Two slanted side pockets



Two pockets with flap/patch



# POLICE BOMBER JACKET

- Fabric: 100% Nylon, water resistant
- Quilted polyfill insulation
- Full cut sleeves for better mobility
- Elastic cuffs and waist
- Machine washable
- Snap down epauletts
- Badge tab w/metal eyelets

SKU	SIZE CHART
1000	N

Colors: Black, Navy



Plush pile collar



Badge tab with metal eyelets



Pleated patch pockets  
w/hand-warmer storage





OUTERWEAR

**BEST SELLER**

## BOMBER JACKET

- Fabric: 100% Nylon, water resistant
- Quilted polyfill insulation
- Badge tab with metal eyelets
- Machine washable
- Heavy duty zipper
- Full cut sleeves
- Inside storm flap

**SKU**    **SIZE CHART**

**1001**    **N**    \*Available in XS

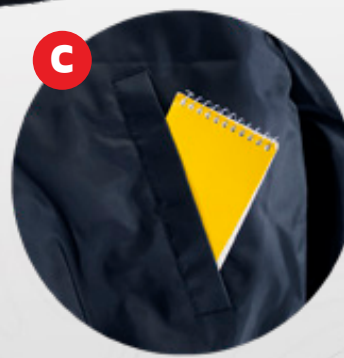
**Colors:** Black, Navy



Plush pile collar



Badge tab with metal eyelets



Two Slash welt pockets

800.858.6755

**22**



OUTERWEAR



## TACT GEN JACKET

- Fabric: 100% Nylon
- Treated with Aquatact™ for increased water resistance
- Three inside pockets (jackets)
- Removable Insulated liner
- Removable fur collar
- Badge tab with metal eyelets
- Zipper side vents w/button snaps
- Gold P Buttons
- YKK™ Two-Way zipper
- Machine washable
- Elastic waist for a snug fit
- Hook + Loop adjustable cuffs
- Pleated patch pockets w/hook+loop closure with side entry

SKU	SIZE CHART
F1003	N *Available in XS

Colors: Black, Dark Navy, Green



## JOB SHIRT 2.0

- Fabric: 80% Cotton / 20% Polyester
- Fleece inner lining
- Lower placket mic tab
- Dual shoulder mic tabs
- Consealed D-ring
- Dual hidden chest pockets
- Patch friendly pen pockets
- Large elbow canvas patches
- Matching canvas collar
- Dual lower hand pockets
- Machine washable

SKU	SIZE CHART
2005	N *No 6x

Colors: Navy





## SECURITY PARKA WITH REMOVABLE HOOD

- Fabric: 100% Nylon shell
- Side vents with a snap
- Inside storm flap
- Heavy-duty YKK® zipper
- Plush pile collar
- Zip off quilted hood with drawstring
- Polyfill quilted lining
- Machine washable

SKU	SIZE CHART
1011	N

Colors: Navy, Black



## COMMANDO V-NECK

- Fabric: 100% Acrylic Yarn
- Original Tact Squad V-neck commando sweater design
- Hook + Loop fastened epaulets
- Reinforced elbow patches for increased durability
- Badge tab included (not applied)
- Breathable design allows you to stay warm without overheating
- Fold up cuff design
- Machine washable

SKU	SIZE CHART
2003	N *No 6x

Colors: Navy, Black



## UNIFORM BLAZER

- Fabric: 100% wrinkle-resistant textured woven Polyester
- Traditional two button single breasted
- Fully-lined with two inside pockets
- Center back vent for comfort
- Three button cuff
- Dry clean only
- Burgundy and Heather Gray available in Men's only

SKU	GENDER	SIZE CHART
8000	M	K
8000W	W	L *No 24-28

**Colors:** Heather Gray, Navy, Black, Burgundy





OUTERWEAR



## PERFECT STORM DUTY JACKET

- Fabric: 100% Nylon
- Treated with Climatact™ for wind and water proof
- Two-way bellows fleece lined, hand-warming pockets
- Inside storage pockets
- Heavy-duty YKK® two way zipper
- Three fully concealable customizable identification panels:
- Three in front and 1 in back Optional Hi-Vis preprinted panels:
- SHERIFF, POLICE, SECURITY, and EMS available in sets of 3
- Thinsulate removable liner for warmth in colder weather
- Ten pocket designs
- Pit Zips to apply patches
- Elastic cuff w/ adjustable snaps
- Tuck away hood into collar
- Machine washable

### HI-VIS OPTIONAL PANEL KITS



SKU	SIZE CHART
F1006	M *Available in XS

Colors: Green, Dark Navy, Black,

800.858.6755

26



## THREE SEASON JACKET

- Fabric: 100% Nylon, water resistant
- Treated with Aquatact™ fabric protection to prevent water penetration
- Collar and torso lined with micro-fleece
- Quilted raglan sleeves
- Heavy-duty YKK® zipper extends to collar
- Two zippered slash pockets
- Knit cuff and waistband
- One internal chest pocket
- Machine washable

SKU	SIZE CHART
1004	N

**Colors:** Navy/Gray Liner,  
Black/Black Liner



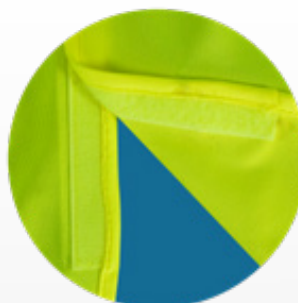


## POLYESTER AIR-MESH SAFETY VEST

- Fabric: 100% Polyester air-mesh
- **SECURITY** lettering on front and rear stripe
- Hook + Loop front closure
- 1/2 in. reflective over the shoulder striping
- One size fits most

SKU	COLOR
DC65YW SECURITY	HI-VIS YELLOW

Colors: Hi-Vis Yellow



Hook + Loop Breaking Points  
for each shoulder, for each side and front

## SAFETY BREAKAWAY VEST

- Fabric: 100% Polyester solid knit
- ANSI 107-2010 Class 2 Level 2, 3rd party certified
- 2 in. reflective stripping
- One lower outside pocket
- Two inside pockets
- Mic tabs on each shoulder
- Hook + Loop breaking points for each shoulder, for each side and front

SKU	COLOR
DC66 PLAIN	HI-VIS YELLOW *No Small

Colors: Hi-Vis Yellow





OUTERWEAR

# PVC RAINCOAT

- Fabric: PVC coated Polyester
- Storm flaps provide additional weather protection
- Two pass through pockets that allow access to duty gear
- Underarm vents and vented back for comfort
- Adjustable snap on sleeves for secure fit
- Available **PLAIN** or with **SECURITY** lettering on back and left chest



\*Optional Security Back Lettering



**SECURITY**

\*Optional Security Back Lettering

SKU	SIZE CHART	
6011Y	N	*No 6x
6011YS	N	*No 6x
6012B	N	*No 6x
6012BS	N	*No 6x

**Colors:**

Yellow, Yellow w/Black Letters  
Black, Black w/White Letters





## REVERSIBLE WATERPROOF RAINCOATS

- Fabric: 100% waterproof 2-ply Nylon
- 2 in. wide reflective around shoulders, chest, bicep forearms, and abdomen
- Metal eyelets on both colors to attach badge
- Storm front flaps with buttons and zipper
- Adjustable button on cuffs
- Three piece reversible/removable hood (Yellow Only)
- Pass through pockets designed to access equipment

SKU	COLOR	SIZE CHART
6011BY	BLACK / YELLOW HI-VIS	N *No 6x
6011BO	BLACK / ORANGE	N *No 6x

Colors:Black/Orange, Black/Yellow





FOOTWEAR

**S310**  
**8" SENTRY**  
**SIZE-ZIP BOOTS**  
Colors: Black

**SENTRY LONG-LASTING  
BOOTS DURABILITY**





FOOTWEAR

## 6" AND 8" SENTRY SIDE-ZIP BOOTS

- Leather and 1200 Denier Nylon construction for superior durability and breathability
- Heavy-Duty YKK® side zipper with hook and loop closure
- Tact-Step™ memory foam removable insole for all day comfort
- Rubber + EVA outsole provides longevity and a cushioned outsole
- Oil and Slip resistant outsole
- Padded suede collar provides added comfort
- Polyester tubed laces
- Speed lace eyelets (top portion)

SKU	SIZE CHART	
S300	6"	BOOTS
S310	8"	BOOTS

Colors: Black



## HI-GLOSS UNIFORM OXFORD SHOES

- Hi-Gloss design means you'll never have to polish your shoes
- Protective lining helps fight against mildew and odor while keeping you nicely ventilated
- Dense outsole helps provide extra comfort and shock absorption
- Tact-Step™ memory foam removable insole for all day comfort
- Non-metallic design

SKU	SIZE CHART
S200	SHOES

Colors: Black



800.858.6755

32





AVAILABLE EARLY SPRING 2023

FOOTWEAR

**NEW!** 

## COYOTE BOOT

### AR 670-1 Compliant

- Flesh-out cattle hide and 1000D Nylon upper for longevity
- Tact-Step™ removable memory foam insole for all day comfort
- Tact-AirMesh™ breathable lining circulates air to keep your feet dry
- Anti-microbial lining helps inhibit odor causing bacteria
- Rubber outsole provides durability and traction
- Fast-Roping arch design
- Oil and Slip resistant
- Composite shank for stability
- Speed lacing eyelets
- Nylon Tubing Lacing

SKU	COLOR	SIZES
S400	COYOTE	4-12, 13 MEDIUM WIDTH 7-12, 13 WIDE WIDTH

**Color:** Coyote





## GARMENT BAG

- 2.5" top hanger slot
- 2 carry handles (top and bottom)
- Visible business card display window
- Mesh lined zipper lower shoe compartment
- Zippered full length top to bottom

SKU	COLOR
TG340	BLACK

Colors: Black



## WAR BAG

- Fabric: 1680 Denier Nylon construction
- Large double zippered main compartment
- Collapsible full-size helmet compartment
- Three front organizer pockets, zipper pocket, and side pocket
- Flashlight and mag pockets
- Adjustable shoulder strap that detaches
- Three Nylon web Velcro straps
- **Main Compartment:** (30 liter capacity)  
19 in x 21.5 in width x 20.5 Height
- **Helmet Capacity** (20 liter capacity)  
13.5 in x 9.5 in width x 10 in Height

SKU	COLOR
TG300	BLACK

Colors: Black



## LOCKER STOCKER

- Measures 11" W x 53in"
- Hidden magnets to grip metal door
- Six pen pockets
- One durable mirror
- One cell phone pocket
- One miscellaneous pocket for notepads, office supplies, etc.
- One heavy-duty clip for holding keys
- One radio holder
- One stinger flashlight holder
- Two magazine pouches
- One heavy-duty dot-snap handcuff holder
- One large flashlight ring holder
- One collapsible baton holder
- Molle system behind flashlight ring for convenience
- One large ticket book holder with Velcro closure
- One large well pocket at bottom to hold duty boots and shoes
- Two heavy-duty clips at top to connect to locker

SKU	COLOR
TG360	BLACK

Colors: Black



NYLON DUTY GEAR

# NYLON DUTY GEAR



## PRODUCT LINE DETAILS

- Ballistic Nylon Weave Material
- Duty Belt (**TG001**) 2.25" wide and fully loop lined
- Tri-Release Buckle on duty belt
- Inner Belt (**TG01**) 1.25" wide and fully hook lined
- Our Molded Pouches and Holders reduce the excess noise by loose fitting gear
- Hidden Snap closure (*on most pouches*)
- Our Looped Pouches fit on belts 2" and 2.25" wide.
- **Belt Sizes: S (28-34), M (34-40), L (40-46), XL (46-52), 2X (52-58), 3X (58-64)**

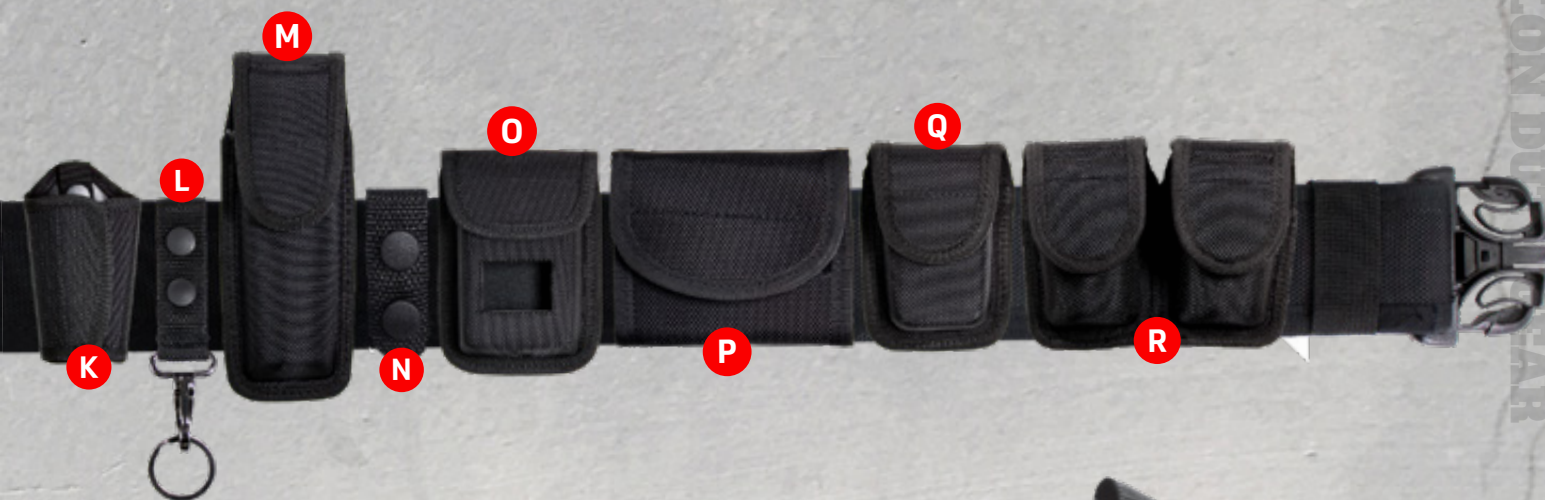
## MAGAZINE POUCH FIT GUIDE

- (1) Stacked** - Colt Gvt, H&K P7-M8 Sig Sauer P220-P225, Ruger P90, S&W 1006, 3904, 3906, 4506
- (2) Staggered** - Beretta 92F/96F, Glock 17/19/22/23, Sig Sauer P226/P228/P229, S&W 4006, 5406, SW40F
- (3) Staggered** - Glock 20/21, H&K USP





# DESIGNED TO WITHSTAND THE RIGORS OF EVERYDAY WEAR AND TEAR



**A** **TG001** Molded Nylon Duty Belt

**B** **TG004** Double Mag Pouch (*See page 35 for sizes*)

**C** **TG003** Single Handcuff Case

**TG002** Double Handcuff Case

**TG023** Hinged Handcuff Case

**D** **TG016** PR-24 Baton Holder

**E** **TG010** 16"/21" Expandable Baton Holder

**TG009** 24"/26" Expandable Baton Holder

**F** **TG008** "AA" Flashlight Pouch

**G** **TG006** STINGER® Flashlight Pouch

**H** **TG015** D-Cell Flashlight Ring

**I** **TG024** Stinger® Flashlight Open Top Holder

**J** **TG021** Swivel Universal Radio Holder

**TG019** Non-Swivel Radio Holder

**K** **TG014** Silent Key Holder

**L** **TG022** Standard Key Holder Ring

**M** **TG005-III** MK-3 OC/Pepper Spray Pouch

**TG005-IV** MK-4 OC/Pepper Spray Pouch

**N** **TG017** Belt Keepers (4-Pack)

**O** **TG012** Alarm Pouch

**P** **TG007** Nitrile/Latex Glove Pouch

**Q** **TG013** Pager/Nitrile Glove Pouch



**R** **TG018** Double Speedloader Pouch

**S** **TG01** Liner Trousers Belt

**T** **TGBUCKLE** Tri-Release Replacement Buckle

**U** **TG025** Adjustable Radio Holder w/Foot

**V** **TG020** MK-9 Leg Holster



## POLYESTER CROSS OVER TIE

- Fabric: 100% textured Polyester
- Matching Color Button
- One size fits most

SKU	COLOR	AVAILABLE SIZES
TIECO	DN, B, BR	ONE SIZE FITS MOST

**Colors:** Dark Navy, Black, Brown



## POLYESTER CLIP-ON TIES

- Fabric: 100% textured Polyester
- 3 in. wide
- Button-holes on small end to keep your tie buttoned to your shirt

**Colors:** Dark Navy, Black, Brown



## WHITE PARADES GLOVES

- 100% Cotton
- Three point back
- Snap closure
- Sold in packs of 10

SKU	COLOR	AVAILABLE SIZES
TG140	WHITE	XS,S, M, L, XL, 2XL,

**Colors:** White



## TACT SQUAD REVERSIBLE RAIN CAP COVERS

- 100% Water-Proof 2-ply Nylon
- Elastic open to accommodate most Round top or 8-point service caps
- Hi-Vis side for additional visibility in foul weather

SKU	COLOR
6300BK	BLACK/ORANGE
6300DNY	NAVY/YELLOW



**NEW!**

## ADJUSTABLE BALL CAP RIPSTOP

- 65% Polyester/35% Cotton Rip-Stop fabric
- Low profile styling
- Structured front panels
- 6 sewn eyelet for ventilation
- 4 row stitching on visor
- Visor is slightly pre-curved
- Adjustable hook & loop closure
- OSFM (One Size Fits Most)

SKU	COLOR
-----	-------

C205	DARK NAVY
------	-----------

Colors: DARK NAVY

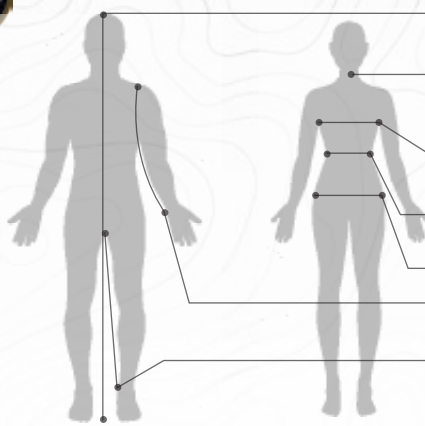


## LED TRAFFIC BATON

- Ideal for parking, pedestrian and traffic control
- Durable high-impact plastic housing with textured grip
- Modes: flashlight red, steady red, flashlight
- 3 super-bright white LEDs in tip create a convenient flashlight
- Uses 3 C-Cell batteries (**Not Included**)
- Sold in packs of 12

SKU	DESCRIPTION
-----	-------------

L3150	LED TRAFFIC BATON W/FLASHLIGHT
-------	--------------------------------



**Height:** Stand straight against the wall without shoes. Make a mark level with the top of the head. Measure from this point down to the floor.

**Neck:** Method 1- Measure a shirt collar that fits you well. Lay the collar flat. Measure from the center of the collar button to the far end of the button hole. Method 2- Measure around the neck where buttoned shirt would fit. Allow for two fingers width between tape measure and neck.

**Chest/Bust:** Measure just under arms across shoulder blades at the fullest part of the chest or bust and back, holding tape firm and level.

**Waist:** Measure over shirt but not over pants, around waist where you would normally wear pants or skirts. Keep the tape level and snug, but not tight.

**Hips:** Measure around fullest point of seat while standing, keeping the tape level.

**Sleeve:** With your arm relaxed at your side and slightly bent, measure from the center back of the neck to across the shoulder around point of elbow to wrist.

**Inseam:** **Method 1:** Measure a well fitted, similarly styled pair of pants (no jeans). Lay them flat, with the front and back creases smooth. Measure from the crotch of the seam along the inseam to the bottom of the hem. **Method 2:** Measure from bottom crotch to 1/2" to 1" above the top of your shoe heel. Styles worn with higher heels require extra length.

To ensure you receive the best possible fit, write down your measurements using the instructions above. Determine which size category you fall into by comparing your measurements with those listed in the charts below. If your measurements fall between two sizes, it is recommended you take the larger size. Height equivalents: shorts up to 5'7", regulars are 5'8"-6'0", longs are 6'1" and taller.

### Men's Conversion Chart

	XS		S		M		L		XL		2XL		3XL	
NECK	13	13.5	14	14.5	15	15.5	16	16.5	17	17.5	18	18.5	19	19.5
CHEST	32	34	36	38	40	42	44	46	48	50	52	54	56	58
SLEEVE	31	32	32.5	33	33.5	34	34.5	35	35.5	36	36.5	37	37.5	38
WAIST	24	26	28	30	32	34	36	38	40	42	44	46	48	50

### Women's Conversion Chart

	XS		S		M		L		XL		2XL	
	2	4	6	8	10	12	14	16	18	20	22	24
WAIST	24	25	26	27	28	29	31	33	35	37	39	41
HIP	33.25	34.25	35.25	36.25	37.25	39.25	41.25	43.25	45.25	47.25	49.25	51.25
THIGH	18.75	19.25	19.75	20.25	21.25	22.25	22.75	23.75	24.75	25.75	26.75	27.75
BUST	31	32	33	34	35	36	38	40	42	44	46	48
SLEEVE	28	28.5	29	29.5	30	30.5	31	31.5	32	32.5	33	33.5

### SHOE AND BOOT SIZES

USA		UK		EURO		SHOES		BOOTS	
MEN'S	WOMEN'S	MEN'S	WOMEN'S	MEN'S	WOMEN'S	REG	WIDE	REG	WIDE
3	4.5	2.5	1	36	35	●			
4	5.5	3.5	2	37	25-36	●		●	
5	6.5	4.5	3	38	37	●		●	
5.5	7	5	3.5	38-39	37-38	●		●	
6	7.5	5.5	4	39	38	●		●	
6.5	8	6	4.5	39	38-39	●		●	
7	8.5	6.5	5	40	39	●	●	●	●
7.5	9	7	5.5	40-41	39-40	●	●	●	●
8	9.5	7.5	6	41	40	●	●	● ●	●
8.5	10	8	6.5	41-42	40-41	●	●	●	●
9	10.5	8.5	7	42	41	●	●	●	●
9.5	11	9	7.5	42-43	41-42	●	●	●	●
10	11.5	9.5	8	43	42	●	●	●	●
10.5	12	10	8.5	43-44	42-43	●	●	●	●
11	12.5	10.5	9	44	43	●	●	●	●
11.5	13	11	9.5	44-45	43-44	●	●	●	●
12	13.5	11.5	10	45	44	●	●	●	●
13	14.5	12.5	11	46	45	●	●	●	●
14	15.5	13.5	12	47	46	●	●	●	
15	16.5	14.5	13	48	47	●	●		



Use a ruler or tape measurer to measure your foot (from the heel to the tip of your longest toe).

Choose a table from the left (U.S. to find your U.S. size, U.K. to find your U.K. size, Euro to find your European size).

Find the closest measurement, in inches, that is equal to or greater than the length of your foot. For example, a man whose foot measures 11-1/4 inches is a U.S. 12, a U.K. 12, or a European 47

\*Tact Squad shoes and boots are available in several sizes, but not in all wide sizes. Please review the above chart to determine which footwear best suites your build. Bullets indicate that we carry specified size.



**A Men's Long Sleeve Shirts**

NECK	14	14.5	15	15.5	16	16.5	17	17.5	18	18.5	19	20	22
32	●	●	●	●	●	●	●	●	●	●	●	●	●
33	●	●	●	●	●	●	●	●	●	●	●	●	●
34	●	●	●	●	●	●	●	●	●	●	●	●	●
35	●	●	●	●	●	●	●	●	●	●	●	●	●
36	●	●	●	●	●	●	●	●	●	●	●	●	●
37	●	●	●	●	●	●	●	●	●	●	●	●	●
38	●	●	●	●	●	●	●	●	●	●	●	●	●

**A2 Men's Long Sleeve Shirts - Alpha Sizing**

	XXS	XS	S	M	L	XL	2XL	3XL	4XL	5XL	6XL
	12-12.5	13-13.5	14-14.5	15-15.5	16-16.5	17-17.5	18-18.5	19-20	21	22	23
30/31	●	●	●	●	●	●	●	●	●	●	●
32/33	●	●	●	●	●	●	●	●	●	●	●
34/35	●	●	●	●	●	●	●	●	●	●	●
36/37	●	●	●	●	●	●	●	●	●	●	●

**B Men's Short Sleeve Shirts**

14	14.5	15	15.5	16	16.5	17	17.5	18	18.5	19	20	21	22
----	------	----	------	----	------	----	------	----	------	----	----	----	----

**B2 Men's Short Sleeve Shirts - Alpha Sizing**

XXS	XS	S	M	L	XL	2XL	3XL	4XL	5XL	6XL
12-12.5	13-13.5	14-14.5	15-15.5	16-16.5	17-17.5	18-18.5	19-20	21	22	23
●	●	●	●	●	●	●	●	●	●	●

**C Women's Long Sleeve Shirts**

BUST	30/32	34	36	38	40	42/44	46/48
30	●	●	●	●	●	●	●
31	●	●	●	●	●	●	●
32	●	●	●	●	●	●	●
33	●	●	●	●	●	●	●
34	●	●	●	●	●	●	●

**C2 Women's Long Sleeve Shirts - Bust Sizing**

BUST	30	32	34	36	38	40	42	44	46	48
30/31	●	●	●	●	●	●	●	●	●	●
32/33	●	●	●	●	●	●	●	●	●	●
34	●	●	●	●	●	●	●	●	●	●

**C2 Women's Long Sleeve Shirts - Alpha Sizing**

	XS	S	M	L	XL	2XL	3XL	4XL
30/31	●	●	●	●	●	●	●	●
32/33	●	●	●	●	●	●	●	●
34	●	●	●	●	●	●	●	●

**D Women's Short Sleeve Shirts**

30	32	34	36	38	40	42	44	46	48
●	●	●	●	●	●	●	●	●	●

**D2 Women's Short Sleeve Shirts - Alpha sizing**

SIZE	S	M	L	XL	2XL
	30-32	34-36	38-40	42-44	46-48
●	●	●	●	●	●

**E Men's Trousers**

28	29	30	31	32	33	34	35	36	37	38	40
●	●	●	●	●	●	●	●	●	●	●	●
42	44	46	48	50	52	54	56	58	60	64	66
●	●	●	●	●	●	●	●	●	●	●	●

**E2 Tactical Pants Unhemmed**

28	30	32	34	36	38	40	42	44	46	48	50
●	●	●	●	●	●	●	●	●	●	●	●
52	54										
●	●										

**E3 Men's Trousers - Alpha Sizing**

XS	S	M	L	XL	2X	3X	4X	5X	6X
●	●	●	●	●	●	●	●	●	●

**F Women's Trousers**

2	4	6	8	10	12	14	16	18	20	22	24	26	28	30
●	●	●	●	●	●	●	●	●	●	●	●	●	●	●

**G BDU Shirts**

	XS	S	M	L	XL	2XL	3XL	4XL	5XL
CHEST		39-41	43-45	47-49	51-53	55-57	58-60	62-64	66-68
SHORT SLEEVE		31-33	33-34	34-35	35-36				
REG SLEEVE		33-34	34-35	35-36	36-37	37-38	38-39	39-40	40-41

**H BDU Trousers**

		S	M	L	XL	2XL	3XL	4XL	5XL	6XL
SHORT	WAIST	27-31								
	INSEAM	30								
REG	WAIST	27-31	31-35	35-39	39-43	43-47	47-51	51-55	55-59	59-63
	INSEAM	32	32	32	32	32	32	32	32	32
LONG	WAIST	31-35	35-39	39-43	43-47	47-51	51-55	55-59	59-63	
	INSEAM	35	35	35	35	35	35	35	35	35

**I Motor Breeches**

	28	29	30	31	32	33	34	35	36	37
25	●	●	●	●	●	●	●	●	●	●
27	●	●	●	●	●	●	●	●	●	●
29	●	●	●	●	●	●	●	●	●	●
	38	40	42	44	46	48	50	52	54	
25	●	●	●	●	●	●	●	●	●	●
27	●	●	●	●	●	●	●	●	●	●
29	●	●	●	●	●	●	●	●	●	●

**J Oxford Shirts**

	S	M	L	XL	2XL	3XL	4XL	5XL
NECK	14-14.5	15-15.5	16-16.5	17-17.5	18-18.5	19-20	21	22
SHORT	●	●	●	●	●	●	●	●
REG	●	●	●	●	●	●	●	●
LONG	●	●	●	●	●	●	●	●
XLONG	●	●	●	●	●	●	●	●

**K Men's Blazers, Dress Coats, Jumpsuits**

	34	36	38	40	42	44	46	48	50	52	54	56	58	60
SH	●	●	●	●	●	●	●	●	●	●	●	●	●	●
RG	●	●	●	●	●	●	●	●	●	●	●	●	●	●
LNG	●	●	●	●	●	●	●	●	●	●	●	●	●	●

**L Women's Blazers, Dress Coats**

SIZE	2	4	6	8	10	12	14	16	18	20	22	24	26	28
BUST	37.5	38.5	39.5	40.5	41.5	43	44.5	46	50	52	54	56	58	60
BACK REG	28.5	28.75	29	29.25	29.5	29.75	30	30.25	30.75	31	31.25	31.5	31.75	32
TALL						31.75	32	32.25	32.75	33	33.25			
SLEEVE REG	22	22.25	22.5	22.75	23	23.25	23.5	23.75	24.25	24.5	24.75	25	25.25	
TALL						24.75	25	25.25	25.75	26	26.25			

**M Jackets, Outerwear**

	S	M	L	XL	2XL	3XL	4XL	5XL	6XL
	34-36	38-40	42-44	46-48	50-52	54-56	58-60	62-64	66-68
SHORT	●	●	●	●	●	●	●	●	●
REG	●	●	●	●	●	●	●	●	●
LONG	●	●	●	●	●	●	●	●	●

**N Jackets, Vests, Polo Shirts, Sweaters & Raincoats**

S	M	L	XL	2XL	3XL	4XL	5XL	6XL
34-36	38-40	42-44	46-48	50-52	54-56	58-60	62-64	66
●	●	●	●	●	●	●	●	●



**TACT  
SQUAD**

800.858.6755 • [www.TactSquad.com](http://www.TactSquad.com)  
250 N. BENJAMIN DR. CORONA, CA 92879



TACT SQUAD IS PART OF THE AMWEAR USA FAMILY OF BRANDS.  
FOR MORE INFORMATION ON OUR PRODUCTS VISIT OUR WEBSITE [WWW.TACTSQUAD.COM](http://WWW.TACTSQUAD.COM)